



3500/69



3900/41



P. 306



3400/90



3121



3400/91



3500/57



3400/52



P. 360



P. 293



3779
9 oz. Tall Goblet



3779
6 oz. Tall Sherbet



3779
9 oz. Low Goblet



3779
6 oz. Low Sherbet



3779
3 oz. Cocktail



3779
2 1/2 oz. Wine



3779
4 1/2 oz.
Oyster Cocktail



3779
4 1/2 oz. Claret



3779
1 oz. Cordial



3779
12 oz. Ftd. Ice Tea

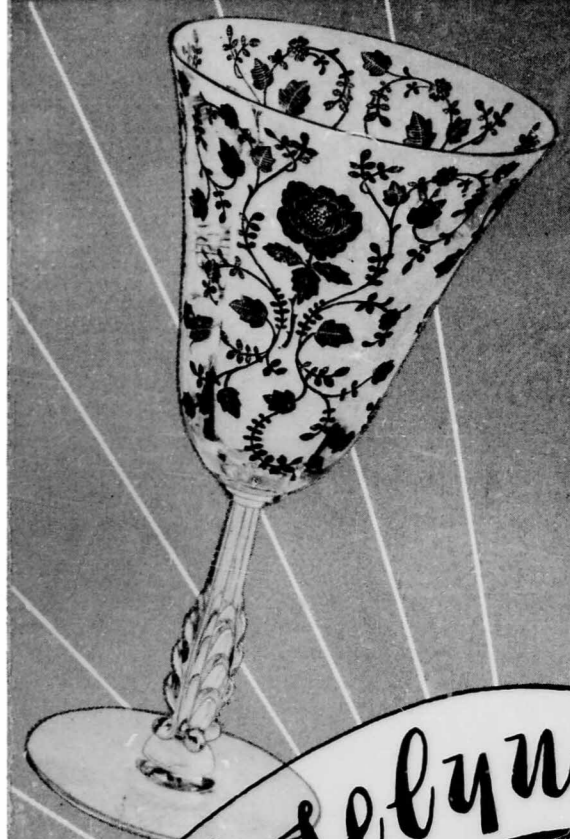


3779
5 oz. Ftd. Tumbler

List of Roselyn Items

- 3779 9 oz. Tall Goblet
- 3779 6 oz. Tall Sherbet
- 3779 9 oz. Low Goblet
- 3779 6 oz. Low Sherbet
- 3779 3 oz. Cocktail
- 3779 2 1/2 oz. Wine
- 3779 4 1/2 oz. Oyster Cocktail
- 3779 12 oz. Ftd. Ice Tea
- 3779 5 oz. Ftd. Tumbler
- 1174 6 in. B & B Plate, Square
- 1176 8 1/2 in. Salad Plate, Square
- 3400/35 11 in. 2 Hdl. Plate Sugar & Cream
- 3900/41 6 in. 2 part Relish
- 3400/90 14 in. Plate, r.e.
- 3900/125 9 in. 3 part Celery & Relish
- 3400/91 8 in. 3 part Relish
- 3900/126 12 in. 3 part Celery & Relish
- 3900/120 12 in. 5 part Celery & Relish
- P. 248 11 in. Celery Tray
- 646 5 in. Candlestick
- 3400/48 11 in. 4 Ftd. Bowl, Fancy Edge
- 647 6 in. 2 lite Candlestick
- 3400/160 12 in. 4 Ftd. Bowl, oblong
- 1338 6 in. 3 lite Candlestick
- 3400/4 12 in. 4 Ftd. Bowl, flared
- P. 533 2 pc. Mayonnaise Set
- P. 1491 4 pc. Twin Salad Dressing Set
- 3500/57 3 part Candy Box & Cover
- P. 306 6 in. Candy Box & Cover (cut knob)
- P. 293 6 oz. Oil
- 3400/52 5 in. Butter & Cover
- 3121 5 3/4 in. Blown Compot
- P. 360 Salt & Pepper w/Chrome Top
- 3500/69 6 1/2 in. 3 part Relish
- 3500/55 6 in. 2 Hdl. Ftd. Basket
- 3400/1181 6 in. 2 Hdl. Bonbon Plate
- 3400/1180 5 1/2 in. 2 Hdl. Bonbon
- 3500/54 6 in. 2 Hdl. Ftd. Bonbon
- 3900/118 32 oz. Jug
- 3900/116 80 oz. Ball Jug
- P. 101 32 oz. Cocktail Shaker
- 3900/115 72 oz. Jug
- 3900/671 Ice Pail w/Hdl. & Tong
- 274 10 in. Ftd. Bud Vase
- 278 11 in. Ftd. Vase
- 1238 12 in. Ftd. Vase
- 1237 9 in. Ftd. Vase

THE CAMBRIDGE GLASS COMPANY
CAMBRIDGE, OHIO





3400/160



P. 248



3500/55



P. 533



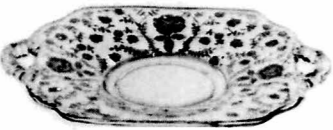
P. 1491



1338



646



3400/1181



1174



3900/126



1176



3400/35



3900/118



3900/116



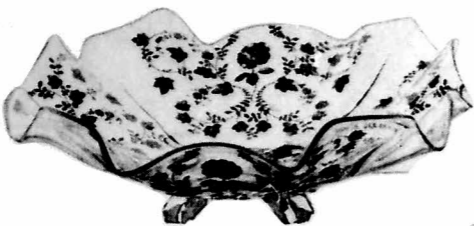
647



3900/115



3900/120



3400/4



3400/1180



278



1238



1237



274



P. 101



3900/871



3900/166



3400/48



3500/54



3900/125